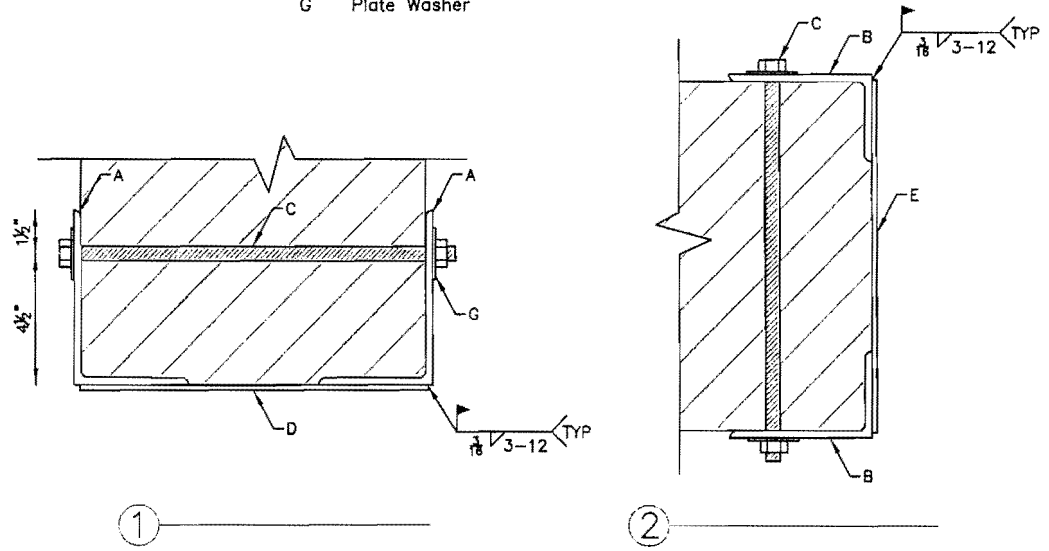


NOTE: Max opening width will require selective demolition of corridor wall for angle installation

Recommended installation sequence:

1. Prepare jamb L5x3x1/4 angles for the AP side of wall by cutting/drilling holes in angles to receive through-bolts.
2. Cut in vertical L5x3x1/4 angles on AP side of wall.
3. Drill through masonry wall using predrilled holes in jamb angles as a guide.
4. Mark hole locations on the L5x3x1/4 angles for the Annex jamb angles. Cut in vertical L5x3x1/4 angles on Annex side of wall.
5. Install nuts on through-bolts, creating a vertical steel angle/masonry column on each side of opening.
6. Prepare header L6x4x1/4 angles for AP side of wall by cutting/drilling holes in angles to receive through-bolts.
7. Cut in header L6x4x1/4 angle on AP side of wall.
8. Drill through masonry wall using predrilled holes in header angle as a guide.
9. Mark hole locations on the header angle for the Annex side of the wall. Cut/drill holes to receive through bolts at the marked hole locations.
10. Cut in header angle L6x4x1/4 on the Annex side of the wall.
11. install nuts on through bolts, joining the angles together.
12. Weld tops of jamb angles to bottoms of header angles.
13. Remove approximately 12" of masonry wall below header angle.
14. Install 3/16" header cover plate.
15. Remove remainder of brick from opening.
16. install 3/16" jamb cover plate.
17. Construct step and handrails to join finished floor elevations.
18. Provide finishes as directed by Owner.

- A L6x4x1/4 LLV (2)
- B L5x3x1/4 LLV (4)
- C 3/8" diameter through-bolt (11-header, 16-jamb)
- D 3/16" cover plate (header) (1)
- E 3/16" cover plate (jamb) (2)
- G Plate Washer

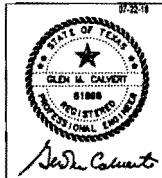


①

②

Priefert
COMPLEX DESIGNS

2630 S. JEFFERSON | MT. PLEASANT, TEXAS 75455 | (PHONE) 1-800-527-8818 FIRM NO. F-10801



**TITUS COUNTY ANNEX
MASONRY WALL MODIFICATIONS**

WALL DETAIL

PROJECT NO: 1624	DRAWN BY: MM	S1.01
DATE: 7/22/2016	CHECKED BY: GC	
		SCALE: 3/4" = 1'-0"